



Features



Gated development

Duplex flats

One bed flats have WC as well as bathroom

Fully fitted kitchen with integrated appliances

Carpet with tiles in bathroom and kitchen

One flat has personal entrance and fenced back garden

One flat has personal fenced back garden

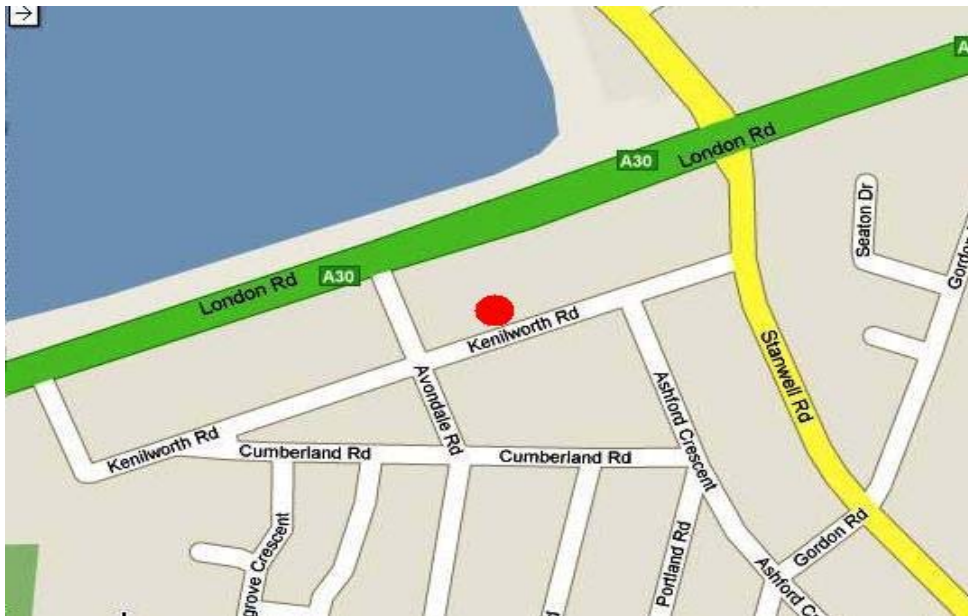
Flat 9 has unique high ceiling in living room. Also has a walk in wardrobe in one of the bedrooms

Gas central heating

NHBC sound proof

10% Renewable energy will be provided at the development

Location Map

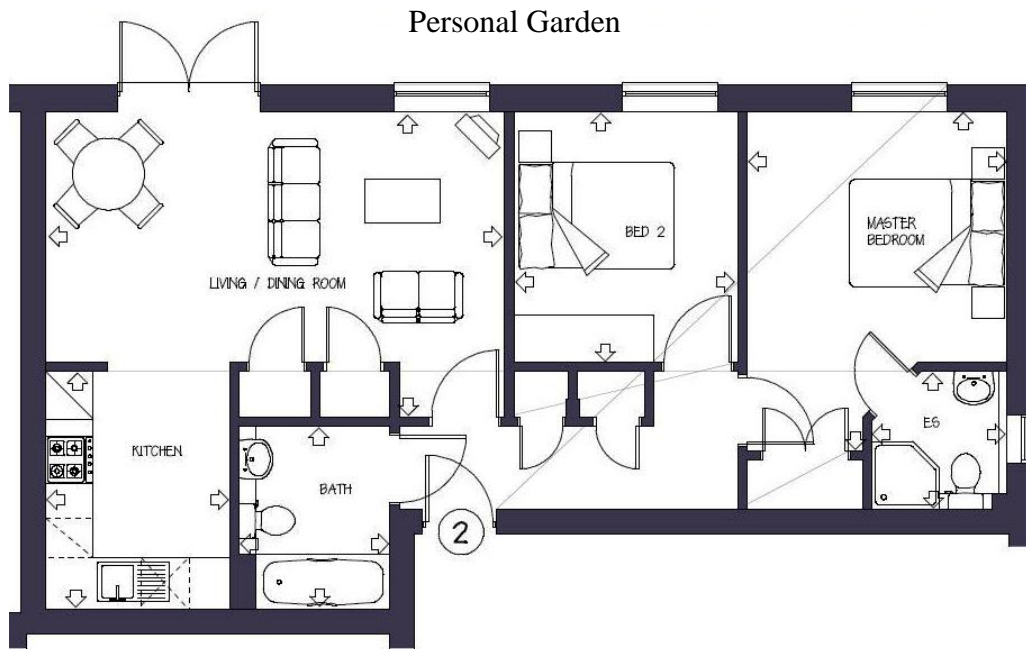


NEW UNIQUE SPACIOUS APARTMENTS—ASHFORD



A VERY UNIQUE GATED DEVELOPMENT OF 9 SPACIOUS APARTMENTS. THE GROUND FLOOR UNITS HAVE THEIR OWN FENCED GARDENS AND THE 1ST FLOOR UNITS ARE DUPLEX (TWO STOREY) WITH BATHROOM & CLOAKROOM. ASHFORD RAILWAY STATION AND TOWN CENTRE SHOPS ARE A SHORT WALK.

NOTICE: ALL ROOM SIZES ARE APPROXIMATE - ASPEN HAVE NOT CARRIED OUT A SURVEY ON THIS PROPERTY AND OFFER NO GUARANTEES - ALL FLOOR-PLANS ARE NOT TO SCALE AND OFFERED AS A GENERAL LAYOUT GUIDE. ALL BUYERS TO RE-MEASURE FOR FIXTURES AND PERSONAL FITTINGS.



Ground Floor Garden Apartment 2
(Communal Front Door Entrance)

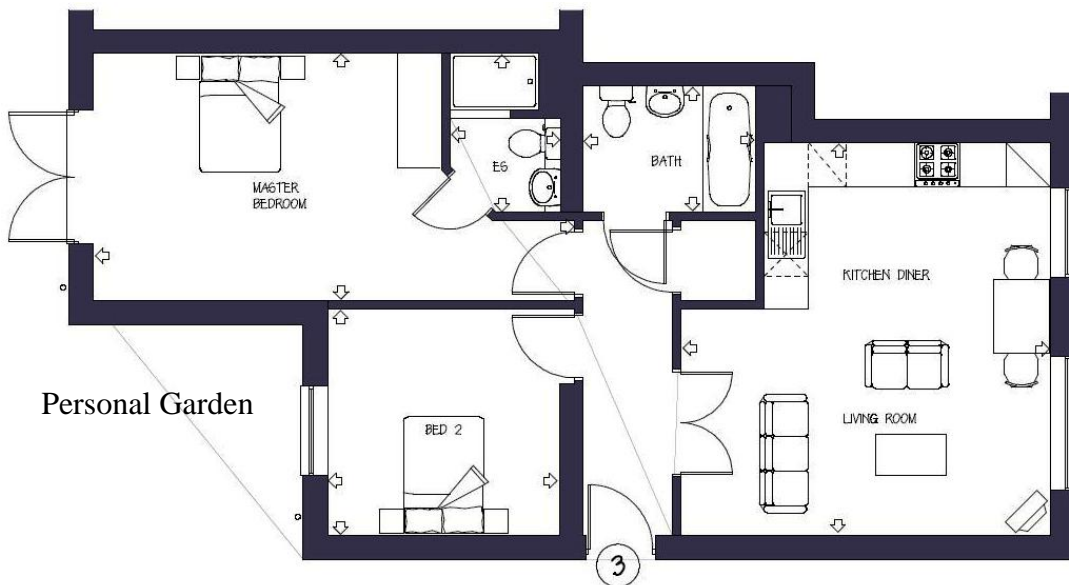
£244,950 Leasehold
Approximate Room Dimensions

- Living Room/Dining Room: 18'11" x 13' (5.77m x 3.65m)**
- Master Bedroom 14' x 10'4" (4.27m x 3.27m)**
- En-Suite 5'8" x 5'7" (1.73m x 1.70m)**
- Bedroom 2 10'4" x 9'3" (3.16m x 2.80m)**
- Bathroom 8' x 6' (2.31m x 1.89m)**
- Kitchen 10' x 7'7" (3m x 2.32m)**

Own Garden

Approximate Sq Feet 710
This apartment faces the rear
Ground Rent: £150 p.a.
Estimated Maintenance £699.50 p.a.

Please note: All room sizes are approximate and all floor-plans are not to scale and offered as a general layout guide. The builder will reserve the right to make alterations.



Ground Floor Garden Apartment 3
(Communal Front Door Entrance)

£249,950 Leasehold
Approximate Room Dimensions

- Living Room/Kitchen/Dining Room: 17'4" x 16'3" (5.27m x 4.96m)**
- Master Bedroom 21'3" x 10'11" (6.47m x 3.32m)**
- En-Suite 7' x 4'10" (2.14m x 1.47m)**
- Bedroom 2 10'3" x 9'11" (3.12m x 3.03m)**
- Bathroom 7'7" x 5'7" (2.31m x 1.70m)**

Own Garden

Approximate Sq Feet 735
This apartment faces front to rear
Ground Rent: £150 p.a.
Estimated Maintenance £463.50 p.a.
(This apartment only pays a part maintenance)

Please note: All room sizes are approximate and all floor-plans are not to scale and offered as a general layout guide. The builder will reserve the right to make alterations.

First & Second Floor Duplex Apartment 5

(Communal Front Door Entrance)

£234,950 Leasehold

Approximate Room Dimensions

Living Room/Dining Room: 21' x 15'8" (6.32m x 4.77m)

Master Bedroom 12' x 9' (3.60m x 2.73m)

First Floor Bathroom 7' x 5'7" (2.07m x 1.70m)

Bedroom 2 9' x 9' (2.73m x 2.60m)

Second Floor Bathroom 7' x 5' (2.01m x 1.53m)

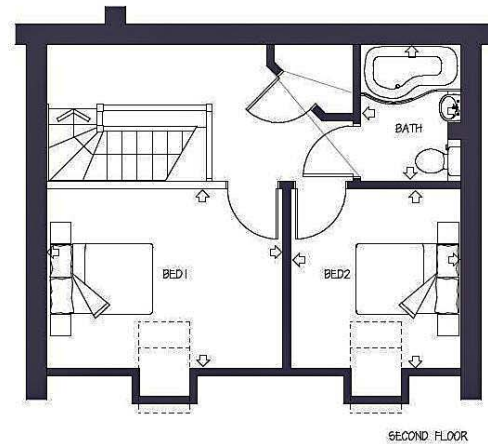
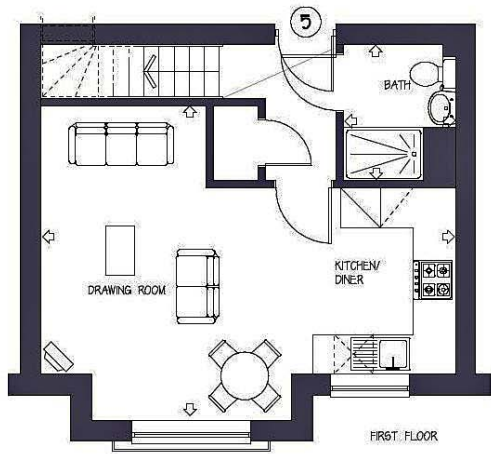
First Floor Separate WC

Approximate Sq Feet 681

This apartment faces the front

Ground Rent: £150 p.a.

Approximate Maintenance £618 p.a.



Please note: All room sizes are approximate and all floor-plans are not to scale and offered as a general layout guide. The builder will reserve the right to make alterations.

First & Second Floor Duplex Apartment 6

(Communal Front Door Entrance)

£194,950 Leasehold

Approximate Room Dimensions

Living Room/Dining Room: 17'3" x 14'5" (5.25m x 4.39m)

Bedroom 13'2" x 12'10" (4m x 3.92m)

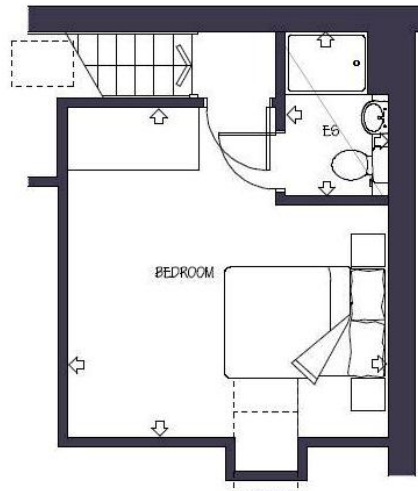
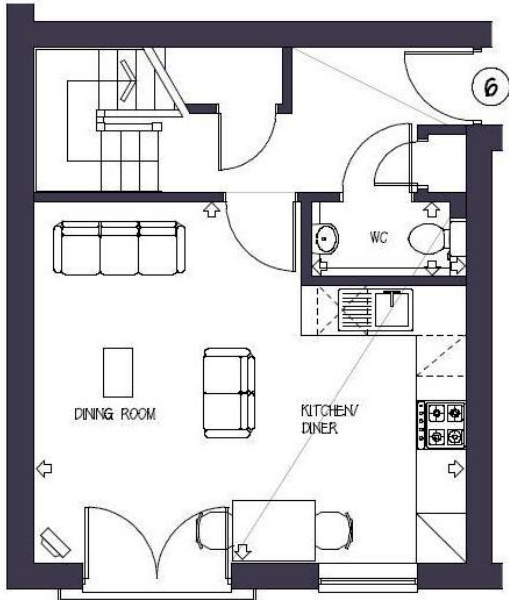
En-Suite 6'7" x 4'2" (1.99m x 1.26m)

Approximate Sq Feet 561

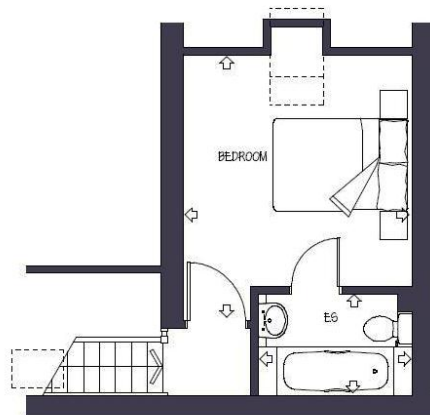
This apartment faces front and side

Ground Rent: £100 p.a.

Estimated Maintenance £515 p.a.



Please note: All room sizes are approximate and all floor-plans are not to scale and offered as a general layout guide. The builder will reserve the right to make alterations.



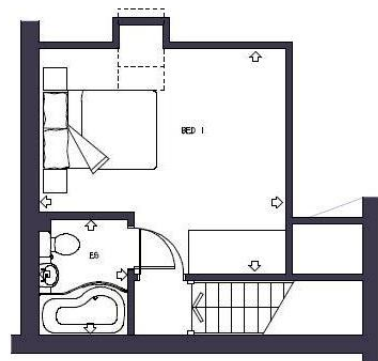
First & Second Floor Duplex Apartment 7 (Communal Front Door Entrance)

£187,450 Leasehold
Approximate Room Dimensions

Living Room/Dining Room: 16'5" x 10'11" (5m x 3.32m)
Bedroom 12' 7" x 10'11" (3.85m x 3.32m)
En-Suite 7'3" x 4'10" (2.22m x 1.47m)
First floor Separate WC

Approximate Sq Feet 510
This apartment faces the rear
Ground Rent: £100 p.a.
Approximate Maintenance £463 p.a.

Please note: All room sizes are approximate and all floor-plans are not to scale and offered as a general layout guide. The builder will reserve the right to make alterations.



First & Second Floor Duplex Apartment 9 (Communal Front Door Entrance)

£249,950 Leasehold
Approximate Room Dimensions

Living Room/Dining Room: 22'11" x 11'1" (6.98m x 3.37m)
Bathroom 6'9" x 5'7" (2.07m x 1.69m)
Master Bedroom 13'11" x 12'9" (4.24m x 3.87m)
En-Suite 6'7" x 5' (1.99m x 1.53m)
Bedroom Two 12'5" x 9'7" (3.77m x 2.91m)

Feature Cathedral High Ceiling in Living Room

Approximate Sq Feet 767
This apartment faces the rear
Ground Rent: £150 p.a.
Approximate Maintenance £669.50p.a.

Please note: All room sizes are approximate and all floor-plans are not to scale and offered as a general layout guide. The builder will reserve the right to make alterations.